

Getting to know **TEPMETKO**

THE **ONLY** APPROVED **ONCE-DAILY** ORAL TREATMENT*

For people living with metastatic non-small cell lung cancer (mNSCLC) with *MET* exon 14 (*MET*ex14) skipping alterations†

What is **TEPMETKO** used for?

TEPMETKO is a prescription medicine used to treat adults with non-small cell lung cancer (NSCLC) that:

- has spread to other parts of the body (metastatic), and
- whose tumors have an abnormal mesenchymal epithelial transition (*MET*) gene. Your healthcare provider will perform a test to make sure that **TEPMETKO** is right for you.

It is not known if **TEPMETKO** is safe and effective in children.

*Recommended dose is 450 mg once daily with food; see pages 12-13 to learn more.

†*MET*ex14 skipping is a biomarker representing specific abnormal changes in the *MET* gene that may drive cancer growth.

SELECTED SAFETY INFORMATION

What Warnings should I know about **TEPMETKO**?

TEPMETKO may cause severe or life-threatening swelling (inflammation) of the lungs during treatment that can lead to death. Tell your healthcare provider right away if you develop any new or worsening symptoms of lung problems, including: trouble breathing; shortness of breath; cough; or fever.

Please see Selected Safety Information throughout and accompanying full Prescribing Information for **TEPMETKO**.



QUESTIONS YOU MAY HAVE ABOUT TEPMETKO

1

You and your loved ones will likely have questions about your treatment. Here are some questions that may help you start the conversation with your healthcare team at your next appointment.

Remember—being open and honest about your questions and concerns can help you get the most out of your time together. Don't hesitate to ask for more information.

How is TEPMETKO different from other treatments?

Is there anything I should do before taking TEPMETKO?

What can I expect during treatment?

How will I know if TEPMETKO is working?

What are the possible side effects of TEPMETKO, and how do I manage them?

How long do I need to take TEPMETKO?

Write down any other questions you may have:

Please see Selected Safety Information throughout and accompanying full Prescribing Information for TEPMETKO.



GETTING TO KNOW TEPMETKO

This brochure explains what metastatic NSCLC with *MET*ex14 skipping is and how treatment with TEPMETKO may help. It also includes clinical trial data, common side effects of the medicine, dosing instructions, and more.

What is mNSCLC with *MET*ex14 skipping? 3

How does *MET*ex14 influence lung cancer? 4

What is TEPMETKO? 5

Why TEPMETKO? 6

How was TEPMETKO studied? 7

How may TEPMETKO help? 8

What are the possible side effects? 10

How is TEPMETKO taken? 12

What support and resources are available? 14

*MET*ex14=mesenchymal-epithelial transition exon 14; mNSCLC=metastatic non-small cell lung cancer; NSCLC=non-small cell lung cancer.

Please see Selected Safety Information throughout and accompanying full [Prescribing Information](#) for TEPMETKO.



WHAT IS mNSCLC WITH *MET*ex14 SKIPPING?

Based on 2024 estimates in the United States:

More than

234,000



individuals were
newly diagnosed
with lung cancer^a

Of those individuals,

87%

have NSCLC^b

There are many types of NSCLC, some of which have specific genetic differences that are not inherited. These genetic differences, or gene mutations, can cause lung cancer cells to grow and multiply.

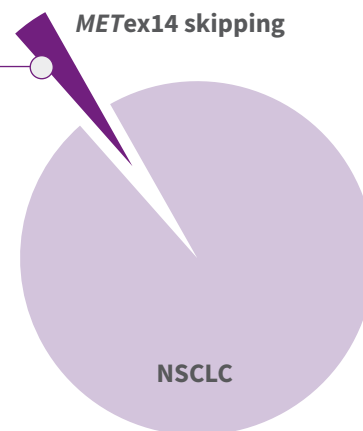
In a healthy individual, the *MET* gene plays a key role in organ development, tissue repair, and wound healing. ***MET*ex14 skipping alteration is a genetic abnormality in which the *MET* gene is impaired, which can drive cancer growth in NSCLC.**

Approximately

3% to 4%

of NSCLC cases (about 6,100 to 8,100 individuals)
may have the ***MET*ex14 skipping** alterations biomarker^{a,b}

*MET*ex14 can be detected by an FDA-approved comprehensive biomarker test. A positive result for *MET*ex14 skipping may guide your healthcare team in making treatment decisions.



^a<https://seer.cancer.gov/statfacts/html/lungb.html>

^b<https://www.cancer.org/cancer/types/lung-cancer/about/key-statistics.html>

FDA=US Food and Drug Administration; MET=mesenchymal-epithelial transition; *MET*ex14=mesenchymal-epithelial transition exon 14; mNSCLC=metastatic non-small cell lung cancer; NSCLC=non-small cell lung cancer.

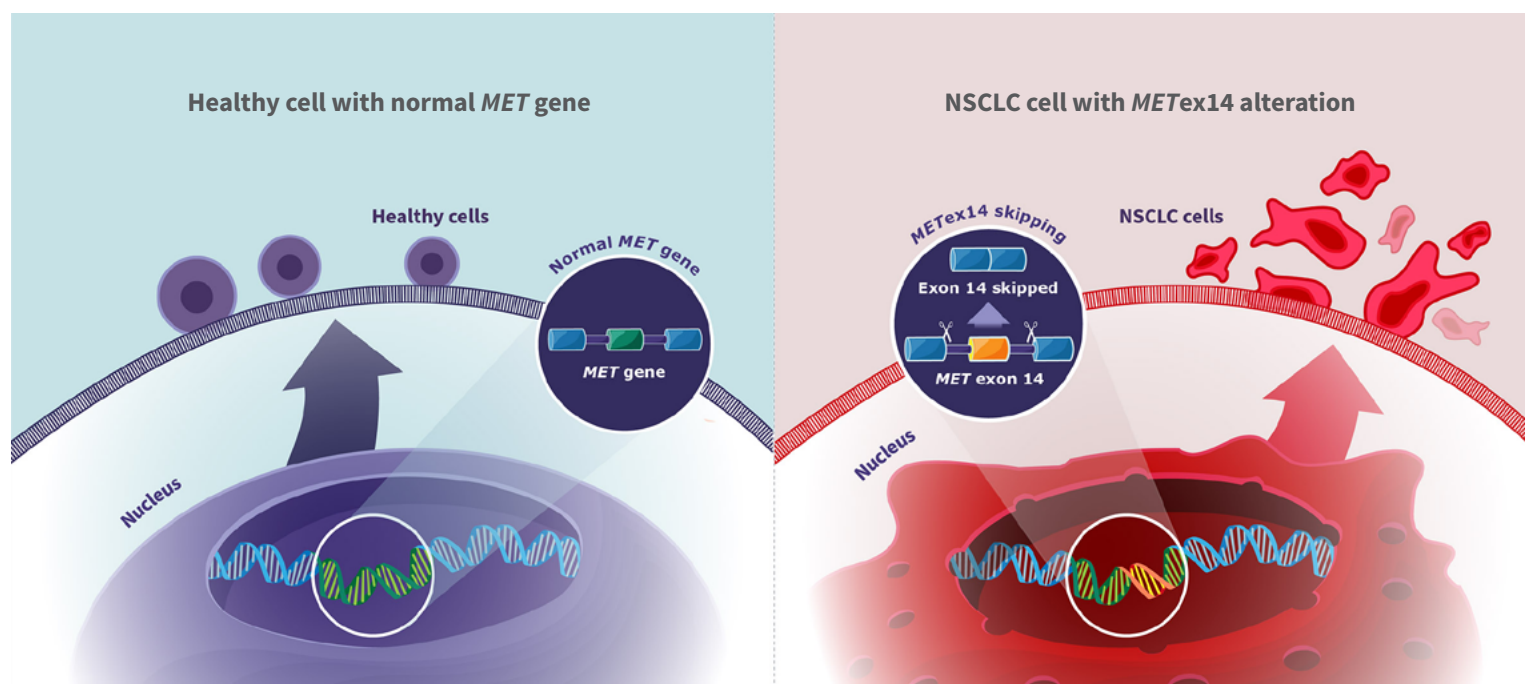
HOW DOES *MET*_{ex14} INFLUENCE LUNG CANCER?

4

*MET*_{ex14} skipping is caused by mutations in the *MET* gene.

Some genetic changes, or mutations, can cause cells to multiply out of control. Certain mutations in the *MET* gene cause *MET*_{ex14} skipping, a specific genetic abnormality leading to the accumulation of cancer-driving proteins, which promote the growth of NSCLC tumors.

Targeted therapies, called MET inhibitors, are available to treat patients with *MET*_{ex14} skipping NSCLC.



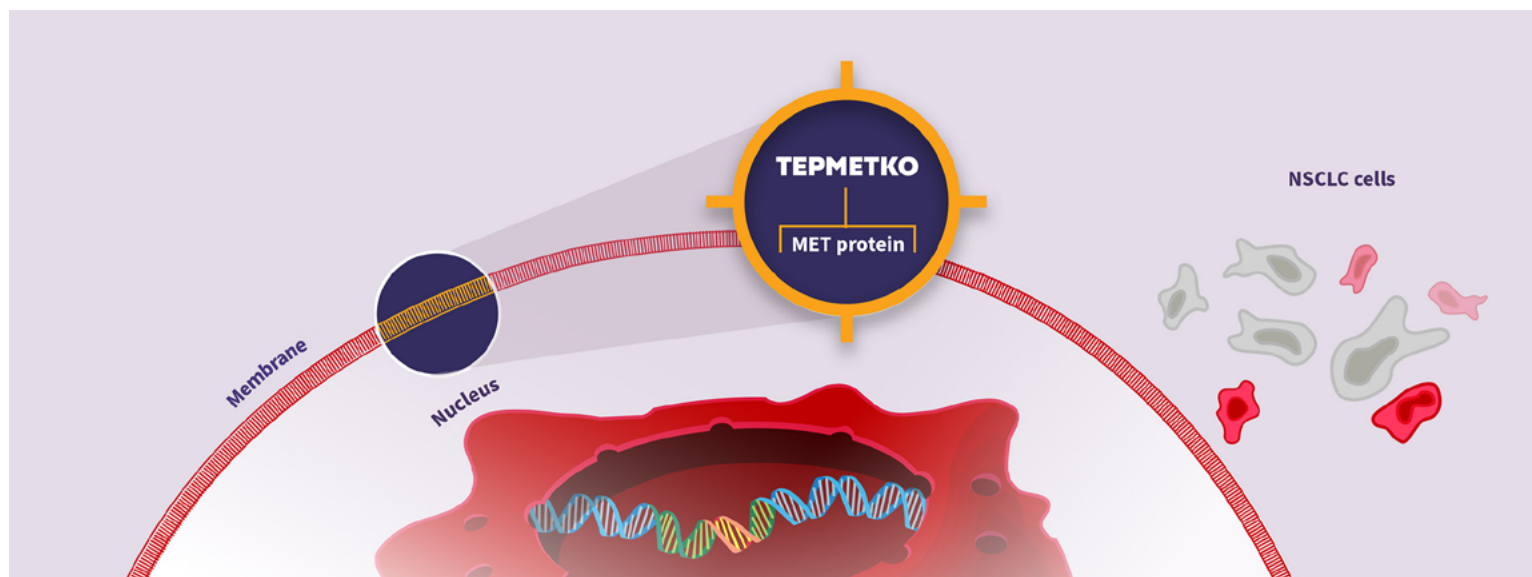
WHAT IS TEPMETKO?

TEPMETKO is a prescription medicine used to treat adults with non-small cell lung cancer (NSCLC) that:

- has spread to other parts of the body (metastatic), and
- whose tumors have an abnormal mesenchymal-epithelial transition (*MET*) gene

How does TEPMETKO work?

TEPMETKO works by binding to and blocking MET proteins to help prevent cancer from growing.



SELECTED SAFETY INFORMATION

What Warnings should I know about TEPMETKO? (continued)

TEPMETKO may cause abnormal liver blood test results. One patient died from liver failure. Your healthcare provider will do blood tests to check your liver function before you start treatment and during treatment with TEPMETKO. Tell your healthcare provider right away if you develop any signs and symptoms of liver problems, including: your skin or the white part of your eyes turns yellow; dark or “tea colored” urine; light-colored stools (bowel movements); confusion; tiredness; loss of appetite for several days or longer; nausea and vomiting; pain, aching, or tenderness on the right side of your stomach-area (abdomen); weakness; or swelling in your stomach-area.

Please see **Selected Safety Information throughout and accompanying full Prescribing Information for TEPMETKO.**



WHY TEPMETKO?

Tepotinib (TEPMETKO) has been used to treat mNSCLC since 2021. It is recommended as a **preferred treatment for METex14 skipping mNSCLC by the National Comprehensive Cancer Network® (NCCN®).**^{1*} The criteria for NCCN preferred status is based on effectiveness, safety, and evidence.

Once-daily tablets taken at home

TEPMETKO is the ONLY FDA-approved ONCE-DAILY oral treatment[†] for people with mNSCLC who have METex14 skipping.

Targets MET

TEPMETKO is a cancer treatment specifically developed to target NSCLC cells that have an abnormal MET gene.

Shrinks tumors

TEPMETKO works by binding to the MET protein and blocking further signaling to help prevent the production of other cancer-driving proteins. This helps shrink tumors, slowing the growth and spread of mNSCLC.

Slows cancer growth and spread

*In patients taking TEPMETKO as their first treatment and those previously treated before taking TEPMETKO, if previous treatment did not include a MET inhibitor.

[†]Recommended dose is 450 mg once daily with food; see pages 13-14 to learn more.

FDA=US Food and Drug Administration; MET=mesenchymal-epithelial transition; METex14=mesenchymal-epithelial transition exon 14; mNSCLC=metastatic non-small cell lung cancer; NSCLC=non-small cell lung cancer.

Reference: 1. Referenced with permission from the NCCN Guidelines for Patients based on the NCCN Clinical Practice Guidelines in Oncology (NCCN Guidelines®) for Non-Small Cell Lung Cancer, Version 3. 2025 (<https://www.nccn.org/guidelines/guidelines-detail?category=1&id=1450>) — copyright date April 23, 2024. © National Comprehensive Cancer Network, Inc. 2024. All rights reserved. Accessed April 26, 2024. To view the most recent and complete version of the guideline, go online to NCCN.org.

NCCN makes no warranties of any kind whatsoever regarding their content, use or application and disclaims any responsibility for their application or use in any way.

SELECTED SAFETY INFORMATION

What Warnings should I know about TEPMETKO? (continued)

TEPMETKO may cause increases in your blood amylase and lipase levels that may indicate a problem with your pancreas. Your healthcare provider will do blood tests to check your pancreatic function before you start treatment and during treatment with TEPMETKO. Tell your healthcare provider right away if you develop upper stomach (abdominal) pain, weight loss, nausea, or vomiting.

Please see Selected Safety Information throughout and accompanying full Prescribing Information for TEPMETKO.



HOW WAS TEPMETKO STUDIED?

7

The effectiveness of TEPMETKO was studied in the largest clinical trial in *METex14* skipping mNSCLC, with 313 adults divided into 2 groups:

1 164 people who were
NOT PREVIOUSLY TREATED
before taking TEPMETKO

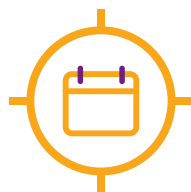
2 149 people who were
PREVIOUSLY TREATED
before taking TEPMETKO

The clinical trial measured:



Overall response rate

The percentage of people who saw their tumors shrink or disappear*



Duration of response

How long their cancer continued to respond to treatment without growing or spreading

*In some people, tumors become smaller or the number of tumors decrease. Tumors can also disappear (not the same as a cure).
METex14=mesenchymal-epithelial transition exon 14; mNSCLC=metastatic non-small cell lung cancer.

SELECTED SAFETY INFORMATION

What Warnings should I know about TEPMETKO? (continued)

TEPMETKO can cause harm to an unborn baby in pregnant women.

Females who are able to become pregnant:

- Your healthcare provider may do a pregnancy test before you start treatment with TEPMETKO.
- You should use effective birth control (contraception) during treatment and for 1 week after the last dose of TEPMETKO.
Talk to your healthcare provider about birth control methods that may be right for you.

Males with female partners who are able to become pregnant should use effective birth control during treatment with TEPMETKO and for 1 week after the last dose of TEPMETKO.

Please see Selected Safety Information throughout and accompanying full
Prescribing Information for TEPMETKO.



HOW MAY TEPMETKO HELP?

8

Among 164 people **NOT PREVIOUSLY TREATED** for mNSCLC with *MET*ex14 skipping, **TEPMETKO** was proven to help shrink or help slow the growth of tumors

**Nearly 6 in 10 people
(57%)** saw their tumors shrink
or disappear



Among those who saw their
tumors shrink or disappear with
TEPMETKO treatment:

66%

of responses lasted at
least **6 months**

40%

of responses lasted at
least **12 months**

Tumors did not grow or spread for a range of
1.3 to 56.6 months
(up to ~4.7 years)

*MET*ex14=mesenchymal-epithelial transition exon 14; mNSCLC=metastatic non-small cell lung cancer.

SELECTED SAFETY INFORMATION

What should I tell my health care provider?

Tell your healthcare provider about all of your medical conditions, including if you:

- have or have had lung or breathing problems other than your lung cancer
- have or have had liver problems
- have or have had pancreatic problems
- are pregnant or plan to become pregnant. TEPMETKO can harm your unborn baby.
- are breastfeeding or plan to breastfeed. It is not known if TEPMETKO passes into your breast milk.

Do not breastfeed during treatment and for 1 week after the last dose of TEPMETKO.

Tell your healthcare provider about all the medicines you take, including prescription and over-the-counter medicines, vitamins, and herbal supplements.

Please see **Selected Safety Information** throughout and accompanying full
Prescribing Information for TEPMETKO.



HOW MAY TEPMETKO HELP? (CONTINUED)

9

Among 149 people **PREVIOUSLY TREATED** for mNSCLC with *MET*ex14 skipping, **TEPMETKO** was proven to help shrink or help slow the growth of tumors

**Over 4 in 10 people
(45%)** saw their tumors shrink
or disappear



Among those who saw their
tumors shrink or disappear with
TEPMETKO treatment:

66%

of responses lasted at
least **6 months**

36%

of responses lasted at
least **12 months**

Tumors did not grow or spread for a range of
1.4 to 67.6 months
(up to ~5.6 years)

*MET*ex14=mesenchymal-epithelial transition exon 14; mNSCLC=metastatic non-small cell lung cancer.

Please see Selected Safety Information throughout and accompanying full
Prescribing Information for **TEPMETKO**.

 **TEPMETKO**
(tepotinib) 225 mg
Tablets

WHAT ARE THE POSSIBLE SIDE EFFECTS OF TEPMETKO?

The most common side effects of TEPMETKO include:

- Swelling
- Muscle and joint pain
- Loss of appetite
- Nausea
- Diarrhea
- Rash
- Tiredness
- Shortness of breath
- Changes in certain blood tests

Managing edema (swelling)

Swelling in the face or other parts of the body was the most common side effect observed in the TEPMETKO clinical trial.

Talk to your healthcare provider about ways to manage swelling, including:

- Limb elevation
- Diuretics
- Compression stockings
- Exercising regularly
- Dietary salt intake

If you are experiencing or concerned about these or other side effects, contact your healthcare provider, who may:

- Change your dosage
- Temporarily stop treatment
- Permanently stop treatment

These are not all of the possible side effects of TEPMETKO. Call your doctor for medical advice about side effects. You may report side effects to FDA at 1-800-FDA-1088.

Using TEPMETKO safely and effectively

Medicines are sometimes prescribed for purposes other than those listed in a Medication Guide. Do not use TEPMETKO for a condition for which it was not prescribed. Do not give TEPMETKO to other people, even if they have the same symptoms you have. It may harm them. You can ask your pharmacist or healthcare provider for information about TEPMETKO.

Please see **Selected Safety Information** throughout and accompanying full **Prescribing Information** for TEPMETKO.



WHAT ARE THE POSSIBLE SIDE EFFECTS OF TEPMETKO?

(CONTINUED)

While less common, there are some additional side effects that you should be aware of. Talk to your healthcare provider to better understand the potential side effects that could occur while taking TEPMETKO.

Lung problems

TEPMETKO may cause severe or life-threatening swelling (inflammation) of the lungs during treatment that can lead to death. Tell your healthcare provider right away if you develop any new or worsening symptoms of lung problems, including:

- Trouble breathing
- Shortness of breath
- Cough
- Fever

Liver problems

TEPMETKO may cause abnormal liver blood test results. Your healthcare provider will do blood tests to check your liver function before you start treatment and during treatment with TEPMETKO. Tell your healthcare provider right away if you develop any signs and symptoms of liver problems, including:

- Your skin or the white part of your eyes turns yellow
- Dark or “tea colored” urine
- Light-colored stools (bowel movements)
- Confusion
- Tiredness
- Loss of appetite for several days or longer
- Nausea and vomiting
- Pain, aching, or tenderness on the right side of your stomach-area (abdomen)
- Weakness
- Swelling in your stomach-area

Pancreas problems

TEPMETKO may cause increases in your blood amylase and lipase levels that may indicate a problem with your pancreas. Your healthcare provider will do blood tests to check your pancreatic function before you start treatment and during treatment with TEPMETKO. Tell your healthcare provider right away if you develop any signs and symptoms of pancreas problems, including:

- Upper stomach (abdominal) pain that may spread to your back and get worse with eating
- Weight loss
- Nausea
- Vomiting

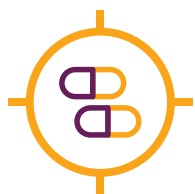
Please see Selected Safety Information throughout and accompanying full Prescribing Information for TEPMETKO.



HOW IS TEPMETKO TAKEN?

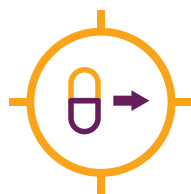
12

TEPMETKO should be taken exactly as your doctor prescribed.



Take 450 mg of TEPMETKO once a day with food.

Do not change your dose or stop taking TEPMETKO unless recommended by your doctor.



Swallow whole.

Do not chew, crush, or split tablets.

- **If you cannot swallow TEPMETKO tablets whole:**
 - Place your prescribed dose of TEPMETKO tablets in a glass that contains 30 mL (1 ounce) of noncarbonated water. **Do not** use or add any other liquids
 - Stir the TEPMETKO tablets and water until the TEPMETKO tablets are in small pieces (the tablets will not completely dissolve). **Do not** crush TEPMETKO tablets
 - Drink the TEPMETKO and water mixture right away or within 1 hour. Make sure to swallow the mixture. **Do not** chew pieces of the tablet
 - Add another 30 mL of non-carbonated water to the glass and drink it right away to get your full dose of TEPMETKO.
- If a nasogastric tube is needed, follow the same instructions for dissolving, and the tube manufacturer instructions for giving the water and TEPMETKO through the tube within 1 hour



Stay on schedule.

Take your dose at about the same time each day.

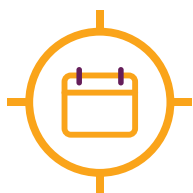
Please see Selected Safety Information throughout and accompanying full Prescribing Information for TEPMETKO.



HOW IS TEPMETKO TAKEN? (CONTINUED)

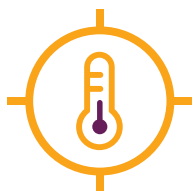
13

What if I miss a dose of TEPMETKO?



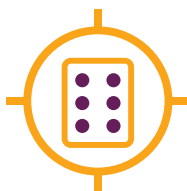
- If you miss a dose of TEPMETKO, take it as soon as you remember. If your next dose is due within 8 hours, skip the missed dose and take your next dose at your regular scheduled time
- If you vomit after taking a dose of TEPMETKO, take your next dose at your regular scheduled time
- Remember, following a routine dosing schedule can help keep your treatment on track

How should I store/handle TEPMETKO?



Store TEPMETKO at room temperature

68°F to 77°F (20°C to 25°C)



Store TEPMETKO tablets in original packaging

(blister cards with child-resistant blister foil)



Keep TEPMETKO and all medicines out of the reach of children

Please see Selected Safety Information throughout and accompanying full [Prescribing Information](#) for TEPMETKO.



WHAT SUPPORT AND RESOURCES ARE AVAILABLE?

CoverOne®

EMD Serono's CoverOne® is a patient access and reimbursement support program available to help eligible patients gain appropriate access to TEPMETKO in the United States.*

Program provides:

- Reimbursement support
- Bridge program for new patients with insurance delays
- Co-pay assistance for privately insured patients
- Patient assistance program/free drug program for eligible patients
- Complimentary TEPMETKO Patient Support Kit for all new patients

Your complimentary TEPMETKO Patient Support Kit may be requested by calling CoverOne or at [TEPMETKO.com](https://www.tepmetko.com)

[CoverOne.com](https://www.coverone.com)

Phone: 844-826-8371 | Fax: 800-214-7295

Monday–Friday: 8:00 AM–8:00 PM Eastern Time

Learn more at [TEPMETKO.com](https://www.tepmetko.com)

Our Access Navigators are committed to helping eligible patients access TEPMETKO

Please contact us if you have any questions or fax a completed CoverOne Enrollment Form to verify patient-specific coverage or request assistance. **Enrollment forms and complete program information are available through [CoverOne.com](https://www.coverone.com).**

You may find additional resources at[†]:
[lungevity.org](https://www.lungevity.org) [metcrusaders.org](https://www.metcrusaders.org)

*Additional program rules and restrictions or conditions may apply.†These organizations are independent nonprofit organizations. Their inclusion here does not indicate or imply endorsement of TEPMETKO or EMD Serono, Inc. In addition, EMD Serono, Inc. has no control over and takes no responsibility for the content of these websites.

EMD Serono, Inc. does not guarantee coverage and/or reimbursement for TEPMETKO. Coverage, coding, and reimbursement policies vary significantly by payer, patient, and setting of care. Actual coverage and reimbursement decisions are made by individual payers following the receipt of claims. Patients and healthcare professionals should always verify coverage, coding, and reimbursement guidelines on a payer and patient-specific basis.



TEPMETKO IS THE **ONLY** APPROVED **ONCE-DAILY** ORAL TREATMENT

for people living with mNSCLC with
*MET*ex14 skipping alterations



- Specifically developed to help shrink or help slow the growth of tumors in *MET*ex14 skipping mNSCLC
- Studied in a clinical trial of 313 adults with *MET*ex14 skipping mNSCLC taking TEPMETKO as their first treatment or who had been previously treated
 - **Nearly 6 in 10 people (57%)** who were not previously treated saw their tumors shrink or disappear
 - **More than 4 in 10 people (45%)** who were previously treated saw their tumors shrink or disappear
 - For 66% of people in both groups, responses to treatment lasted at least 6 months
- The most common side effect of TEPMETKO is swelling in the face or other parts of the body—talk to your doctor about ways to manage swelling
- Resources are available to support you while you are being treated with TEPMETKO

ASK YOUR DOCTOR IF **TEPMETKO
IS THE RIGHT CHOICE FOR YOU**

Learn more at [TEPMETKO.com](https://www.tepmetko.com)

*MET*ex14=mesenchymal-epithelial transition exon 14; mNSCLC=metastatic non-small cell lung cancer.

SELECTED SAFETY INFORMATION

What are the side effects of TEPMETKO?

The most common side effects of TEPMETKO include: swelling in your face or other parts of your body; nausea; tiredness; diarrhea; muscle and joint pain; diarrhea; shortness of breath; loss of appetite; rash; and changes in certain blood tests. Your healthcare provider may change your dose, temporarily stop, or permanently stop treatment with TEPMETKO if you develop serious side effects during treatment. These are not all of the possible side effects of TEPMETKO. Call your doctor for medical advice about side effects.

You may report side effects to FDA at 1-800-FDA-1088 or at www.fda.gov/medwatch.

Please see Selected Safety Information throughout and accompanying full Prescribing Information for TEPMETKO.